

Sample Midterm Exam A--Key

Date: _____

Score: _____

1. Write the name of each pitch and then indicate wheter it would be played on a white key or a black key on the piano. (10 pts.)

Pitch G B# Eb A# Db Fb Ab G# D Bb

W/B W W B B B W B B W B

2. Add stems and beam the notes in groups of three *sixteenth* notes. (6 pts.)

3. Give *one* note value to complete each of the following measures. (4 pts.)

4. Place correct bar lines in the following rhythmic exercises. (7 pts.)

5. Add correct meter signatures to each of the following measures. (6 pts.)

6. Identify the size of each step as **W** (whole) or **H** (half) or **S** (same pitch). (5 pts.)

 S W H W H

7. Identify the following keys in both major and minor. (10 pts.)

M: D E^b C# B F

m: b c a# g# d

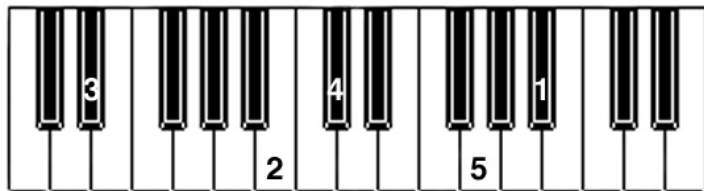
8. Write key signatures and ascending scales as indicated. (9 pts.)

a. Relative major of g minor = B^b major

b. Relative minor (melodic) of E major = c# melodic minor

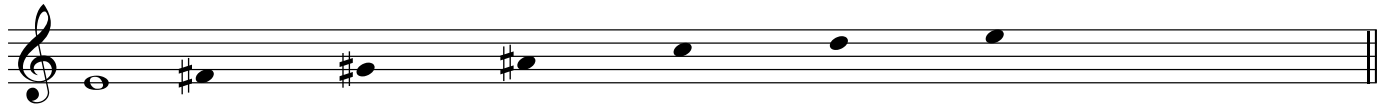
c. F major's parallel minor (harmonic) = f harmonic minor

9. Five pitches are numbered on the keyboard below. Notate their correct pitches on the alto clef provided. "Middle" C is located in the middle of this keyboard. (5 pts.)

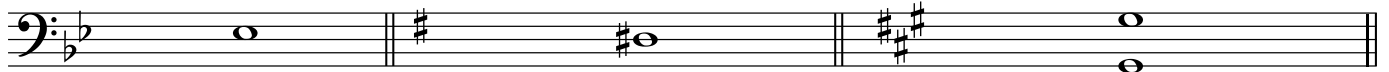


Introduction to Music Theory/Sample Midterm Exam A--Key

10. Beginning on the pitch given, write a whole-tone scale, one octave, ascending only. (2 pts.)

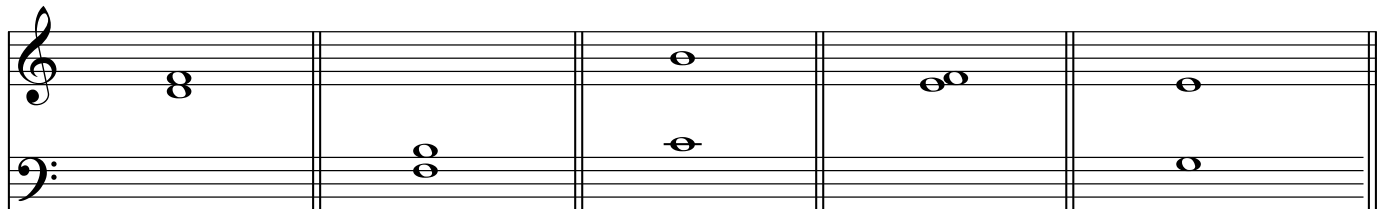


11. Given the key signature, mode and scale-degree name, label the key and write the correct pitch. (6 pts.)



- a. subdominant in major b. leading tone in melodic minor c. supertonic in harmonic minor

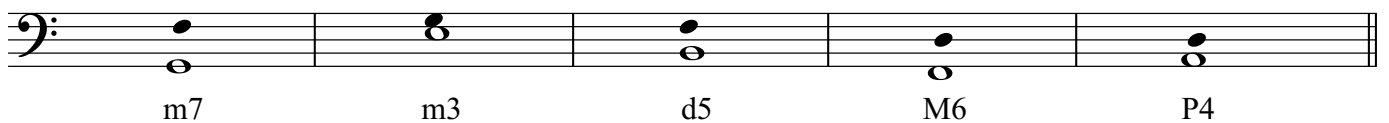
12. Identify the following intervals by quality and size. (5 pts.)



- m3 A4 M7 m2 M6

13. Write the following intervals *above* the given pitch. (5 pts.)

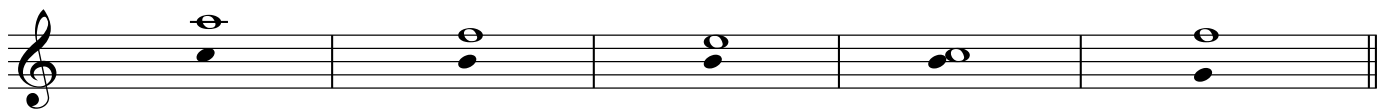
For this exercise, you merely need to write the correct number size.
Determine the quality of each after notating the interval.



- m7 m3 d5 M6 P4

14. Write the following intervals *below* the given pitch. (5 pts.)

For this exercise, you merely need to write the correct number size.
Determine the quality of each after notating the interval.



- m6 d5 P4 m2 m7

Introduction to Music Theory/Sample Midterm Exam A--Key

Match the following: (15 pts.)

- | | | |
|--------------------|---------------|------------------|
| a. octave | g. fermata | m. Lydian mode |
| b. fortissimo | h. pianissimo | n. mezzo forte |
| c. D.C. | i. D.S. | o. ritardando |
| d. staccato | j. slur | p. Phrygian mode |
| e. tone row | k. Largo | q. Allegro |
| f. octatonic scale | l. crescendo | r. Dorian mode |

 L 16. gradually getting louder

 B 17. very loud


 E 18. an arbitrary arrangement of a series of 12 pitches that serves as a pitch pattern for a composition

 P 19. 

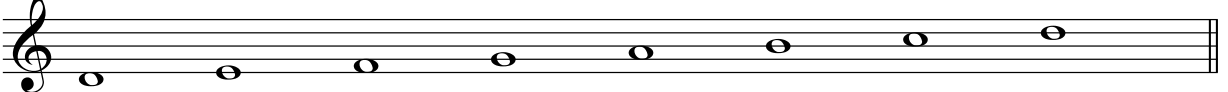
 C 20. an indication to repeat from the beginning

 Q 21. a fast tempo

 O 22. gradually getting slower

 G 23. 

 D 24. perform in a detached manner

 R 25. 

 K 26. very slow tempo

 F 27. a scale that alternates whole steps and half steps

 H 28. very soft

 I 29. repeat from the sign (§)

 M 30. 