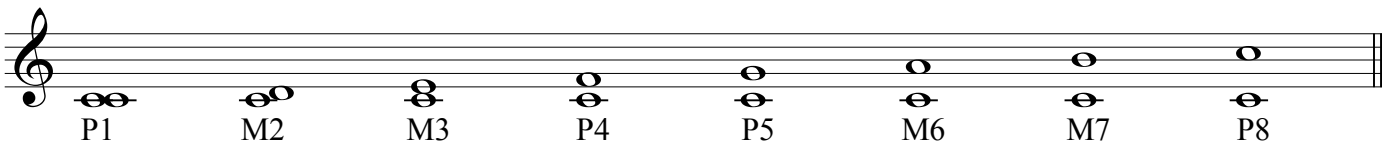


"Note-ables": Intervals

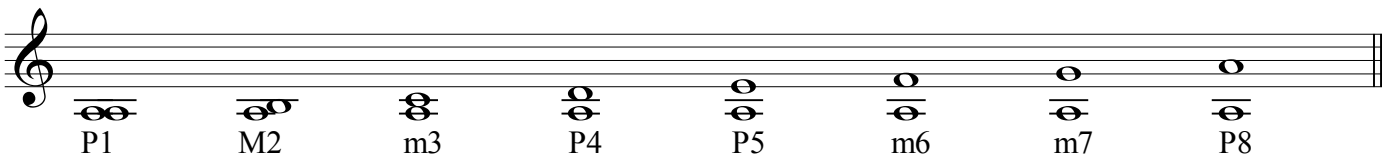
<i>*Interval Chart</i>			
interval sizes 2, 3, 6, 7	A (augmented) M (major) m (minor) d (diminished)	A (augmented) P (perfect) d (diminished)	interval sizes 1, 4, 5, 8

*Intervals get larger by 1/2 step as you go up in this chart, smaller by 1/2 step as you go down. (e.g., M6 is one half-step larger than a m6)

Intervals that occur above a major tonic:



Intervals that occur above a minor tonic:



Determining natural intervals by natural half steps (E-F and B-C):

M2 and M3	have	0	natural half steps
m2 and m3	"	1	" " "
M6 and M7	"	1	" " "
m6 and m7	"	2	" " "

All natural 4ths are perfect, except F-B (which is augmented)
All natural 5ths are perfect, except B-F (which is diminished)