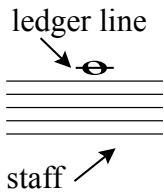


# "Note-ables": Music Symbols

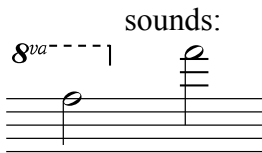


accidentals:

- # sharp (raises pitch 1/2 step)
- b flat (lowers pitch 1/2 step)
- ♮ natural (negates previous accidental)
- × double sharp (raises pitch 1 whole step)
- ♭♭ double flat (lowers pitch 1 whole step)

dynamics:

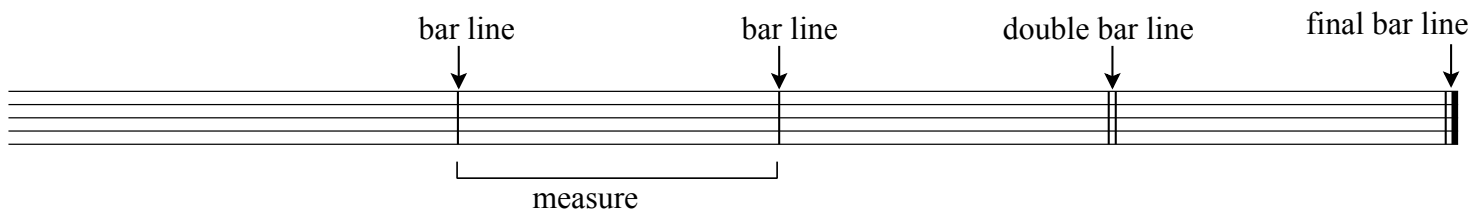
- ff*** very loud
- f*** loud
- mf*** medium loud
- mp*** medium soft
- p*** soft
- pp*** very soft
- cresc. (<) gradually louder
- dim./decresc. (>) gradually softer



sounds:

legato:

staccato:

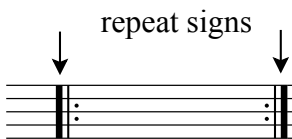
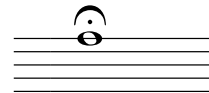


**C** "common time" (4/4)

**♩** "cut time" or *alla breve* (2/2; or simply a half note gets one beat)

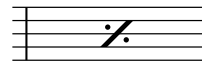


fermata



repeat signs

repeat previous measure



D.C. (*da capo*) repeat from beginning

D.S. (*dal segno*) repeat from the sign (♯)

Tempo markings from slow to fast:

- largo***
- lento***
- adagio***
- andante***
- moderato***
- allegretto***
- allegro***
- presto***
- prestissimo***

- ritardando*** gradually slow down
- accelerando*** gradually speed up